



2017-18 SCHOOL PROFILE

MISSION

Regis Jesuit High School—a Catholic educational community—engages the gifts of young men and women in a single-gender environment, fosters faith in Jesus Christ and promotes justice and mercy, develops critical minds and nurtures compassionate hearts to serve others—all for the greater glory of God.

SERVICE

The service program builds upon itself so that each year students are encouraged to expand and deepen their commitment to be *Men and Women with and for Others*. Upon graduation an RJHS student will have completed at least 175 hours of service, with an emphasis on service with the poor and marginalized.

ACADEMIC PROGRAM

Admission to Regis Jesuit High School is based on previous academic record, entrance exam scores, and teacher recommendations. All students follow a rigorous academic track of college preparatory classes. The theology program at Regis Jesuit is an integral part of our school's identity, as it embodies our mission to develop the entire person.

DISCIPLINE

Disciplinary matters are internal school issues. It is our policy to refrain from commentary on student disciplinary matters. Please contact the student directly.

GRADUATION REQUIREMENTS—28 CREDITS TOTAL

English	4.0 credits	Social Studies	3.0 credits	Computer Science	0.5 credits
Mathematics	4.0 credits	World Languages	2.0 credits	Humanities & Arts	0.5 credits
Theology	4.0 credits	Physical Education	1.0 credits	Electives	5.5 credits
Science	3.0 credits	Communications	0.5 credits	Community Service	175 hours

ADVANCED PLACEMENT AND HONORS CLASSES

AP courses are open to students meeting certain prerequisites. Students in AP courses are not required to take the AP exams. Honors courses require the students to meet objectives higher than those of non-honors courses.

ADVANCED PLACEMENT

Art
AP Studio Art: 2D Design
AP Studio Art: Drawing
English
AP English Language and Composition
AP English Literature and Composition
Math
AP Calculus AB
AP Calculus BC
AP Statistics
Calculus 3
Science
AP Biology
AP Chemistry
AP Environmental Science
AP Physics 1
AP Physics C

ADVANCED PLACEMENT

Social Studies
AP Comparative Government
AP European History
AP U.S. Government
AP U.S. History
AP World History
Technology
AP Computer Science Principles
World Language
AP Chinese Language and Culture
AP French Language and Culture
AP Latin
AP Spanish Language and Culture
AP Spanish Literature and Culture

HONORS CLASSES

Honors English 1
Honors English 2 (British Literature)
Honors Algebra 1
Honors Geometry
Honors Algebra 2/Trig
Introduction Calculus
Honors Biology
Honors Chemistry
Honors French 2
Honors French 3
Honors Latin 2
Honors Latin 3
Honors Spanish 2
Honors Spanish 3

6300 S. Lewiston Way
Aurora, CO 80016
Phone: 303.269.8100
Fax: 303.221.4772
www.regisjesuit.com
School Code: 060082

Founded

Boys Division 1877
Girls Division 2003

Type: Jesuit, Roman Catholic, Private, College Preparatory

Enrollment: 734 Girls
176 Seniors
Faculty: 80 Faculty
49 Masters
3 Doctorates

President

David Card '87, MPA

ADMINISTRATION

Principal

Gretchen Kessler, MSED,
MAdmin

Dean of Students

Kelli Lotito, MS

Academic Assistant Principal

Ryan Williamson, MSED

Assistant Principal for Faculty and Curriculum

Tim Bauer '88, MA

COLLEGE COUNSELORS

Monica Huggins, (A-C)
mhuggins@regisjesuit.com
Sarah Hatfield, (D-I)
shatfield@regisjesuit.com
Mike Delaney, (J-Mi)
mdelaney@regisjesuit.com
Mark Giesmann, (Mo-Sc)
mgiesmann@regisjesuit.com
Laura Hall, (Se-Z)
lhall@regisjesuit.com

College Counseling Assistant

Bonnie Stanford
303.269.8121
bstanford@regisjesuit.com

Registrar

Liane Cattellino
lcattellino@regisjesuit.com

Accreditation: AdvancED

Memberships: Jesuit Schools Network, National Catholic Education Association, Jesuit High School College Counselors Association, Colorado Council on High School/College Relations, National Association of College Admissions Counselors

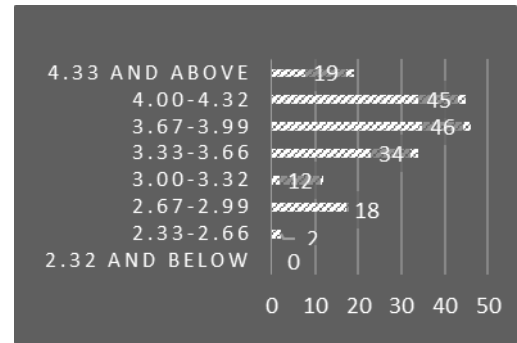
RANK

Regis Jesuit does not rank its students. Instead, we provide this chart with information about the 6th semester grades for the 176 members of the Class of 2018.

GRADE POINT AVERAGE

Regular and Honors classes use this 4.0 scale: AP classes are weighted by one point.

A+ (97-100)=4.33	A (93-96)=4.0	A- (90-92)=3.67
B+ (87-89)= 3.33	B(83-86)=3.0	B- (80-82)=2.67
C+ (77-79)= 2.33	C (73-76)=2.0	C- (70-72)=1.67
D+ (67-69)= 3.33	D (63-66)=1.0	D- (60-62)=0.67
F (00-59)= 0.00	K = F for 1st semester	



Sixth Semester Weighted GPAs

ADVANCED PLACEMENT TESTING

Last year, 290 students took 520 AP tests. 73% of those taking an AP test scored 3, 4 or 5 on the exam.

ASSESSMENT

Test scores reflect all testing results, not just the highest test scores. Test scores are mean test scores.

ACT Scores						SAT Scores			National Merit					
Year	English	Math	Reading	Science	Comp	Year	Critical Reading	Math	Total (1600)	Year	Finalists	Semi-finalists	Commended Students	National Hispanic Scholars
2015	26.2	24.0	25.8	24.3	25.2	2015	567	537	1104	2015	0	1	4	1
2016	26.8	24.7	26.7	24.9	25.9	2016	553	535	1088	2016	1	1	7	4
2017	27.6	25.2	27.0	25.2	26.3	2017	638	603	1241	2017	1	1	3	2

HIGHER EDUCATION

Last year 99% Regis Jesuit graduates enrolled in four-year colleges or universities; 61% of these were out-of-state, 39% in-state, 55% enrolled in public schools and 45% in private schools. The 2017 graduates were accepted to nearly 200 colleges and universities and matriculated to the following schools:

Adams State University	Fort Hays State University	San Diego State University	University of Denver
Arizona State University	Georgetown University	Santa Clara University	University of Kentucky
Auburn University	Gonzaga University	School of the Art Institute of Chicago	University of Michigan
Ave Maria University	Grand Canyon University	Southern Methodist University	University of Mississippi
Baylor University	Hampton University	Spring Hill College	University of Nebraska at Lincoln
Belmont University	John Carroll University	Texas Christian University	University of Northern Colorado
Benedictine College	Kansas State University	The Art Institute of Colorado	University of Notre Dame
Boston College	Langston University	The College of Wooster	University of Pennsylvania
California Polytechnic State University, San Luis Obispo	Laramie County Community College	The University of Alabama	University of Portland
California State University, San Marcos	Lawrence University	The University of Arizona	University of Puget Sound
Carleton College	Loyola Marymount University	The University of North Carolina at Chapel Hill	University of San Diego
Carroll College (Montana)	Loyola University Maryland	The University of Oklahoma	University of Southern California
Chapman University	Metropolitan State University of Denver	The University of Tampa	University of Utah
Clemson University	Miami University, Oxford	United States Air Force Academy	University of Wyoming
College of the Holy Cross	New York University	University of California, Los Angeles	Villanova University
Colorado College	Northern Arizona University	University of California, San Diego	Washington State University
Colorado Mesa University	Regis University	University of Colorado at Boulder	Washington University in St. Louis
Colorado School of Mines	Rockhurst University	University of Colorado at Denver	Western State Colorado University
Colorado State University	Saint Louis University	University of Colorado at Colorado Springs	Wofford College
Colorado State University Pueblo	Saint Louis University, Madrid		
Creighton University	Saint Mary's College of California		