



# 2017-18 SCHOOL PROFILE

6400 S. Lewiston Way  
Aurora, CO 80016  
Phone: 303.269.8000  
Fax: 303.766.2240  
[www.regisjesuit.com](http://www.regisjesuit.com)  
School Code: 060435

## Founded

Boys Division 1877  
Girls Division 2003

**Type:** Jesuit, Roman Catholic, Private, College Preparatory

**Enrollment:** 956 Boys  
231 Seniors  
**Faculty:** 103 Faculty  
66 Masters  
5 Doctorates

## President

David Card '87, MPA

## ADMINISTRATION

### Principal

Alan Carruthers, AD Ed

### Dean of Students

Michael J. Doherty, MA

### Academic Assistant Principal

Ken E. Bostdorff, MEd

**Assistant Principal for Faculty and Curriculum**  
Craig M. Rogers, MA

## COLLEGE COUNSELORS

Monica Huggins, (A-C)  
[mhuggins@regisjesuit.com](mailto:mhuggins@regisjesuit.com)

Sarah Hatfield, (D-I)  
[shatfield@regisjesuit.com](mailto:shatfield@regisjesuit.com)

Mike Delaney, (J-Mi)  
[mdelaney@regisjesuit.com](mailto:mdelaney@regisjesuit.com)

Mark Giesmann, (Mo-Sc)  
[mgiesmann@regisjesuit.com](mailto:mgiesmann@regisjesuit.com)

Laura Hall, (Se-Z)  
[lhall@regisjesuit.com](mailto:lhall@regisjesuit.com)

### College Counseling Assistant

Bonnie Stanford  
303.269.8121  
[bstanford@regisjesuit.com](mailto:bstanford@regisjesuit.com)

### Registrar

Tina Schaaf  
[tschaaf@regisjesuit.com](mailto:tschaaf@regisjesuit.com)

## MISSION

Regis Jesuit High School—a Catholic educational community—engages the gifts of young men and women in a single-gender environment, fosters faith in Jesus Christ and promotes justice and mercy, develops critical minds and nurtures compassionate hearts to serve others—all for the greater glory of God.

## SERVICE

The service program builds upon itself so that each year students are encouraged to expand and deepen their commitment to be *Men and Women with and for Others*. Upon graduation an RJHS student will have completed at least 175 hours of service, with an emphasis on service with the poor and marginalized.

## ACADEMIC PROGRAM

Admission to Regis Jesuit High School is based on previous academic record, entrance exam scores, and teacher recommendations. All students follow a rigorous academic track of college preparatory classes. The theology program at Regis Jesuit is an integral part of our school's identity, as it embodies our mission to develop the entire person.

## DISCIPLINE

Disciplinary matters are internal school issues. It is our policy to refrain from commentary on student disciplinary matters. Please contact the student directly.

## GRADUATION REQUIREMENTS—28 CREDITS TOTAL

English	4.0 credits	Social Studies	3.0 credits	Computer Science	0.5 credits
Mathematics	4.0 credits	World Languages	2.0 credits	Humanities & Arts	0.5 credits
Theology	4.0 credits	Physical Education	1.0 credits	Electives	5.5 credits
Science	3.0 credits	Communications	0.5 credits	Community Service	175 hours

## ADVANCED PLACEMENT AND HONORS CLASSES

AP courses are open to students meeting certain prerequisites. Students in AP courses are not required to take the AP exams. Honors courses require the students to meet objectives higher than those of non-honors courses.

### ADVANCED PLACEMENT

#### Art

AP Studio Art: 2D Design  
AP Studio Art: Drawing

#### English

AP English Language and Composition  
AP English Literature and Composition

#### Math

AP Calculus AB  
AP Calculus BC  
AP Statistics  
Calculus 3

#### Science

AP Biology  
AP Chemistry  
AP Environmental Science  
AP Physics I  
AP Physics C

### ADVANCED PLACEMENT

#### Social Studies

AP Comparative Government  
AP European History  
AP U.S. Government  
AP U.S. History  
AP World History

#### Technology

AP Computer Science Principles

#### World Language

AP Chinese Language and Culture  
AP French Language and Culture  
AP Latin  
AP Spanish Language and Culture  
AP Spanish Literature and Culture

### HONORS CLASSES

Honors English 1  
Honors English 2 (British Literature)  
Honors Algebra 1  
Honors Geometry  
Honors Algebra 2/Trig  
Introduction Calculus  
Honors Biology  
Honors Chemistry  
Honors French 2  
Honors French 3  
Honors Latin 2  
Honors Latin 3  
Honors Spanish 2  
Honors Spanish 3

**Accreditation:** AdvancED

**Memberships:** Jesuit Schools Network, National Catholic Education Association, Jesuit High School College Counselors Association, Colorado Council on High School/College Relations, National Association of College Admissions Counselors

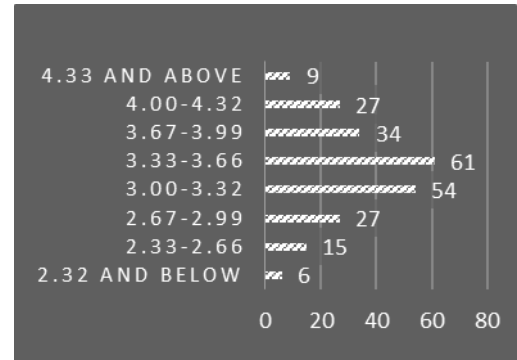
**RANK**

Regis Jesuit does not rank its students. Instead, we provide this chart with information about the 6th semester grades for the 232 members of the Class of 2018.

**GRADE POINT AVERAGE**

Regular and Honors classes use this 4.0 scale: AP classes are weighted by one point.

A+ (97-100)=4.33	A (93-96)=4.0	A- (90-92)=3.67
B+ (87-89)= 3.33	B(83-86)=3.0	B- ( 80-82)=2.67
C+ (77-79)= 2.33	C (73-76)=2.0	C- (70-72)=1.67
D+ (67-69)= 3.33	D (63-66)=1.0	D- (60-62)=0.67
F (00-59)= 0.00	K = F for 1st semester	



**Sixth Semester Weighted GPAs**

**ADVANCED PLACEMENT TESTING**

Last year, 306 students took 586 AP tests. 79% of those taking an AP test scored 3, 4 or 5 on the exam.

**ASSESSMENT**

Test scores reflect all testing results, not just the highest test scores. Test scores are mean test scores.

ACT Scores						SAT Scores			National Merit					
Year	English	Math	Reading	Science	Comp	Year	Critical Reading	Math	Total (1600)	Year	Finalists	Semi-finalists	Commended Students	National Hispanic Scholars
2015	26.2	26.0	26.4	26.1	26.3	2015	585	600	1185	2015	4	4	11	0
2016	27.2	25.9	27.3	26.1	26.7	2016	579	612	1191	2016	3	3	5	2
2017	26.1	25.9	27.0	26.4	26.5	2017	643	652	1295	2017	0	0	7	0

**HIGHER EDUCATION**

Last year 99% Regis Jesuit graduates enrolled in four-year colleges or universities; 61% of these were out-of-state, 39% in-state, 55% enrolled in public schools and 45% in private schools. The 2017 graduates were accepted to nearly 200 colleges and universities and matriculated to the following schools:

American University	Hobart and William Smith Colleges	Pennsylvania State University, Altoona	University of Colorado at Denver
Antelope Valley College	Illinois Wesleyan University	Saint Louis University	University of Colorado Colorado Springs
Auburn University	Indiana University at Bloomington	Regis University	University of Denver
Baylor University	Instituto Tecnologico y de Estudios Superiores de Monterrey	Rensselaer Polytechnic Institute	University of Kansas
Benedictine College	John Carroll University	Santa Clara University	University of Kentucky
Berklee College of Music	Lewis University	Seattle University	University of Michigan
Brown University	Liberty University	South Dakota School of Mines and Technology	University of Notre Dame
Butler University	Life University	South Mountain Community College	University of Oregon
California Polytechnic State University, San Luis Obispo	Loyola Marymount University	Southern Methodist University	University of Puget Sound
Carroll College (Montana)	Loyola University Chicago	Texas Christian University	University of Richmond
College of William and Mary	Marquette University	Texas Tech University	University of San Diego
Colorado College	Massachusetts Institute of Technology	The University of Arizona	University of Southern California
Colorado Mesa University	Metropolitan State University of Denver	The University of Iowa	University of St Andrews
Colorado School of Mines	Miami University, Oxford	Trine University	University of St. Thomas
Colorado State University	Montana State University, Bozeman	Truman State University	University of Washington
Creighton University	Northern Arizona University	United States Air Force Academy	University of Wyoming
Drake University	Pennsylvania State University	United States Military Academy - Army	Vanderbilt University
Embry-Riddle Aeronautical University - Prescott		United States Naval Academy	Virginia Tech
Georgetown University		University of Colorado at Boulder	Xavier University
Gonzaga University			
Hastings College			
High Point University			